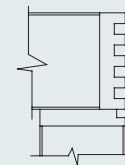




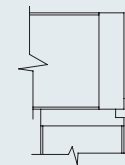


ARCOS CHARACTERISTICS

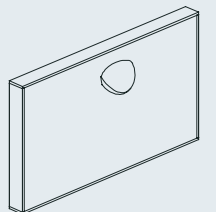
- 1-1/2" thick top with 3/8" solid bands
- Top over pedestal construction
- Clam pull standard
- Edge detail on all four sides; butt jointed corners



T1 Edge



T2 Edge

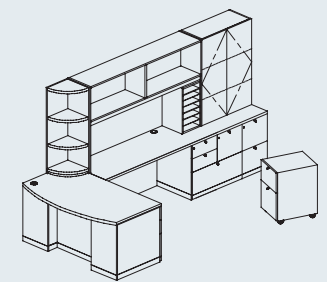
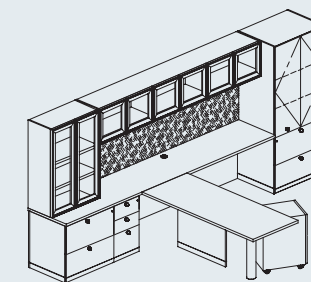
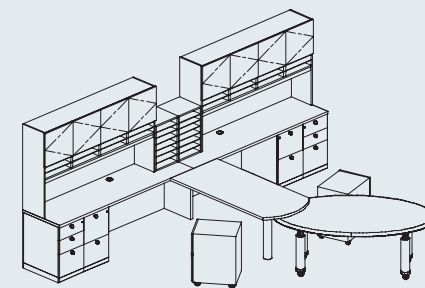
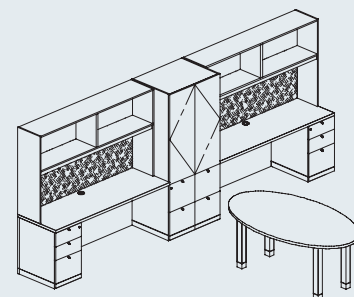


Clam Pull



ARCOS MOBILE TABLE WITH WALL UNIT

Arcos mobile table with wall unit, leg and casters, T1 edge, brushed aluminum, accessory rail, space saving wardrobe, 2" frame.





A



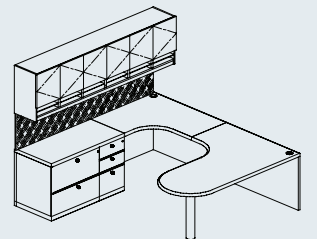
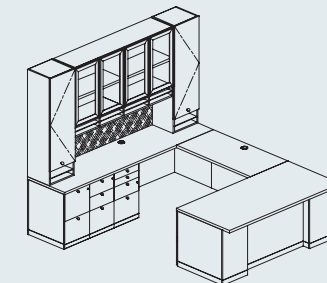
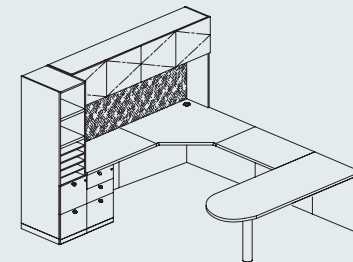
B

A. ARCOS NOTCHED BOW

- Front desk
- T2 edge
- Leather inset
- Macassar panels
- Black 'B' pulls

B. ARCOS WALL WITH RUN-OFF

- Custom Arcos 2" T2 edge
- Miters
- Quarter figure ash veneer
- Glass shelf
- Custom chrome pulls





W O O D T E C H

4611 Malat Street >>> Oakland, CA 94601 >>> tel: 510.534.4930 >>> fax: 510.534.6389 >>> www.woodtechgreen.com