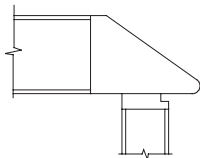
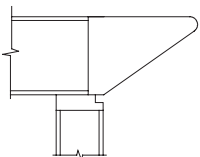


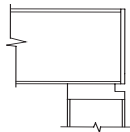
R1 Edge



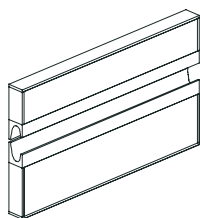
R2 Edge



R3 Edge



R4 Edge



Flush wood pull is standard

Characteristics

- Rival Series can be re-configured from left to right handed stations using existing pedestal configurations.
- No modesty panels - modesty panels can be added for an additional cost, see page 50.
- By adding modesty panels the product will not be re-configurable.
- Hinged doors and pedestals side by side cannot be separated.
- Backs of all pedestals are finished black.
- To make pedestals non-handed, add \$110.00 list per pedestal.
- The swing of a hinged door cannot be changed once specified.
- R1, R2 and R3 edge details are placed on the approach side only. For example, on a Desk-Bridge-Credenza configuration the desk will have either one of these edges on the leading side of the desk (the visitor side). The rest of the pieces will have R4 edge. Free standing pieces 29" high will have R1, R2 or R3 edge detail also (front only). Our Rival edges can be placed at all sides, to customize the furniture, please contact factory for pricing.

Construction

- Top over pedestal construction.
- Finished reveal at the base of end panels and pedestals.
- Top is 1 1/4" thick.
- All bookcases and hutches are 14" in depth. Adding doors increases depth to 15".
- All pedestals are standard with locks, except hinged doors. See accessories page # 11 for hinged door locks.
- Full extension drawer slides.
- Flush wood "C pull" standard on all pedestals.
- Hinged door cabinets have touch latch doors, except hutches.
- One grommet 2 1/2" in each work surface is included in price, if grommet is requested.
- No edge detail on hutches.
- Hutches are built in 3/4" end panel construction.
- Bookcases have edge detail on 29" high only.
- All bookcase shelves are 1 1/4" thick construction with 3/4" end panels.