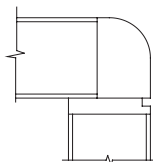
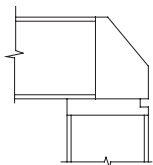


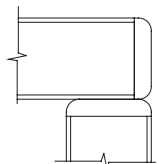
M1 Edge



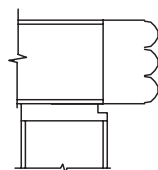
M2 Edge



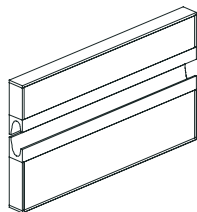
M3 Edge



M4 Edge



M5 Edge



Flush wood pull is standard

Characteristics

- Monterey is a flexible series designed with a traditional approach to case-goods.
- With 21" and 24" deep returns, bridges and components, Monterey will address most clients' needs.
- With 5 edges to choose from, Monterey meets the style requirements of most office environments.

Construction

- Top over end panel construction.
- Top is 1 1/4" thick.
- Edge detail on all four sides.
- Edge detail is butt joint construction.
- Flush wood pulls standard on all pedestals.
- Hinged door cabinets have touch latch doors, except hutches.
- One grommet 2 1/2" in each work surface is included in price, if grommet is requested.
- All shelves are 1 1/4" thick.