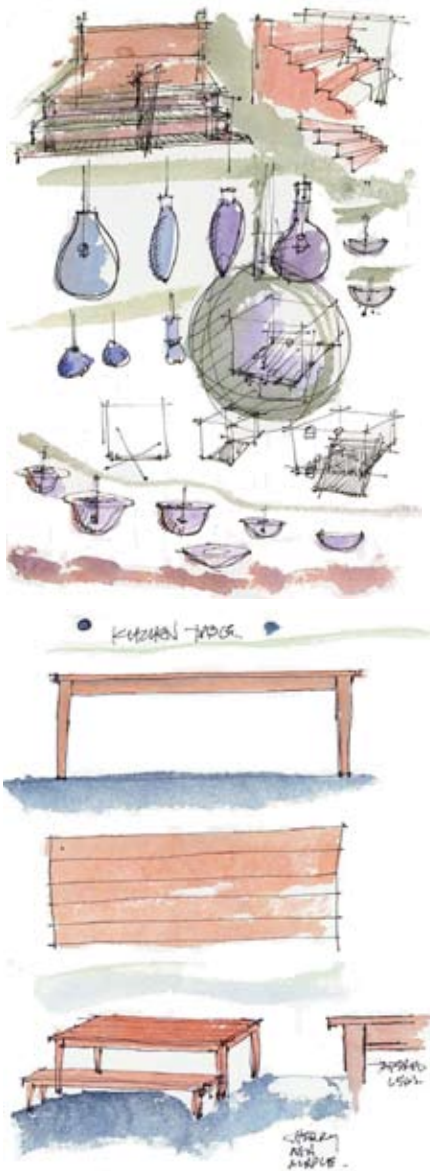


&derson





&derson inspiration

Throughout the design process at anderson architects and woodtech our focus is tailoring a structure to fit our clients' specific needs while accommodating a "loose-fit" architecture. We look for opportunities to continue developing ideas and strategies common in all of our work, while recognizing the inevitability of growth and change in a company or institution, affecting both the building and the space within. Working with straightforward, honest materials that age well and are appropriate to their specific uses, our work emphasizes the inherent strengths found in the program, the site, and the building.

From public spaces and special facilities to furniture and fixtures, we endeavor to enhance the end users' environment as well as to create a design solution that is both remarkable and satisfying.

Evolving from an interpretation of the site, a developed program and an understanding of specific local conditions and materials, the physical elements of our design integrate the new with the familiar. We combine reality-driven practical skills with a creative design vision to translate this union into a successful physical solution that responds to given economic realities and schedules. We design with the intention of serving the client well, enriching the program and creating a "place" that is a result of the conversation between designer and client, project team and program, architecture and site.

As a full service, collaborative team, we at Woodtech offer unmatched design and space planning capabilities along with state-of-the-art production, delivery and installation services. We are fully compliant with all LEED ratings and take the issue of sustainability seriously and apply it to all of our materials sourcing.

We offer a unique opportunity for "one stop shopping": the ability to program, prototype, test, design, fabricate and deliver products that are client "branded", competitively priced, and built to the highest standards.

PROJECT: World Headquarters for Levi Strauss & Co.

PROJECT SCOPE: (6) floors of open workstations, open workspac, offices, studios, conference rooms, and support spaces + (1) floor conference center, cafeteria, gallery atrium, retail store, and facility support spaces

PROJECT SIZE: 350,000sf; population: 1,600

We were asked to design the new World Headquarters for Levi Strauss & Co. as the moved themselves from occupying two buildings at Levi’s Plaza into one. In addition to the spatial requirements, Levi’s was looking for a reinvention of their workspace and how they worked together. As dynamic, innovative company, a primary goal was creating an inspiring space that promoted collaboration. In contrast to their previous space, offices, conference rooms and showrooms, and other support program were shifted to the center of the floor plates, anchoring an open workspace in which everyone had access to daylight and views.

The project was based around aggressive schedule and a restrictive budget. The first three floors of staff moving in just four months after construction began; construction included a full demolition, leaving a production time for the first phase of millwork of __ weeks.

FF&E budget: \$28.60/sf

original workstation	\$4,000 / workstation type a (work surface and back table)
budget number:	\$4,500 / workstation type b (work surface and back table)
	\$5,200 / executive office furniture (desk and credenza)
actual costs:	\$2,500 / workstation type a (work surface and portion of shared back table)
	\$3,525 / executive office furniture (desk and credenza)

Following an initial pricing exercise it was determined that the project budget needed to be cut across the board, so we recommended looking at custom workstations; in our experience, working with a millworker directly we have often been able to design workstations that are actually less expensive than systems furniture—and tailored to the specific needs of the client.

As a company constantly moving and changing and in the process of reorganizing across departments, a flexible furniture system was essential. Departments had to be able to grow and change and be relocated quickly and efficiently, so the ‘system’ had to be essentially universal and easily adaptable to different department needs. Based on these requirements a kit of elements was developed that included worksurface, file storage, computer risers, book shelves, privacy panels, and pin-up surface.

As a creative company, a system designed around collaboration was critical as well shared worktables accommodated individual storage as well as providing a shared surface for layout and around which meetings could happen. Partial height millwork, rather than full height walled storage rooms, provided department shelving and a garage for rolling racks, which allowed light to reach the closed offices even as it shaped spaces.

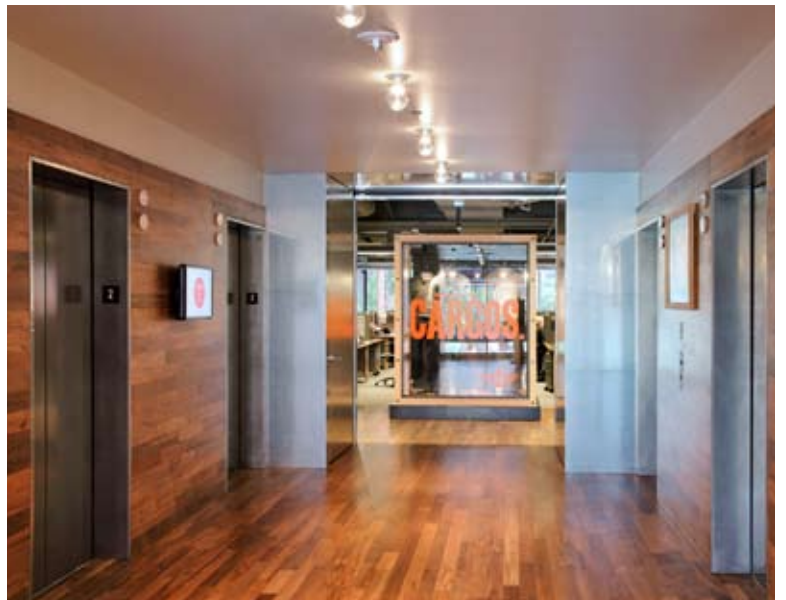
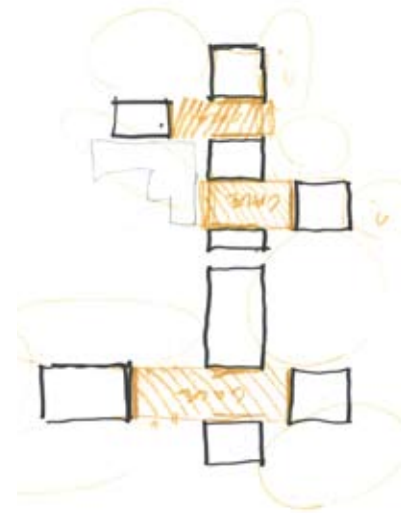
Initially approximately 50% of the workstations were to have been system furniture allocated to the hr, finance and IT departments, while the creative studios were to get the custom workstations. Following a presentation of the design, the other departments requested that they could also be assigned the new Levi’s workstation.

We worked with Woodtech to develop and hone the details, creating cost-effective and innovative solutions. Through the development of highly functional workstations a corresponding array of efficient storage components, the company was successfully moved from the two buildings, where the spaces combined to provide approximately 340sf per person to a single building in which people occupied 190sf per person including shared and collaborative workspaces. In today’s office, as workspace square footages are decreasing and people are working more closely together, it is even more critical to create well-designed and affordable work place solutions.

LEVI'S PLAZA

San Francisco
California

2010
interior renovation of
corporate headquarters
LEED rating: Silver,
certification pending



LEVI'S PLAZA

San Francisco
California

2010
interior renovation of
corporate headquarters
LEED rating: Silver,
certification pending



LEVI'S PLAZA

San Francisco
California

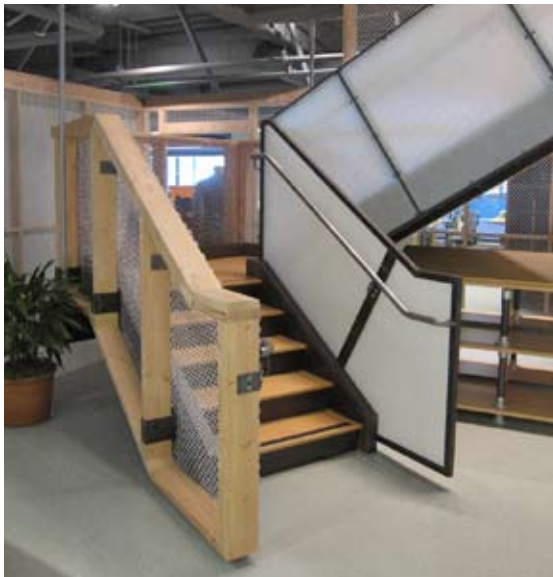
2010
interior renovation of
corporate headquarters
LEED rating: Silver,
certification pending



LEVI'S PLAZA

San Francisco
California

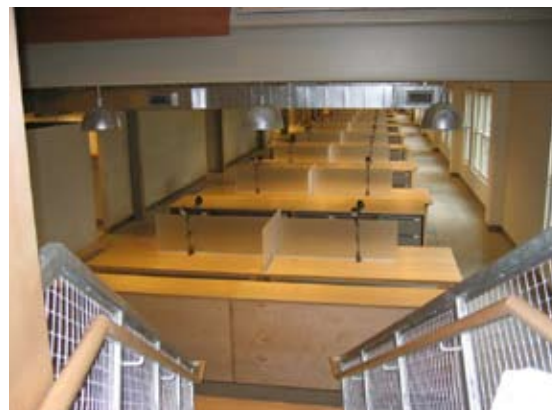
2010
interior renovation of
corporate headquarters
LEED rating: Silver,
certification pending



ABERCROMBIE & FITCH

New Albany
Ohio

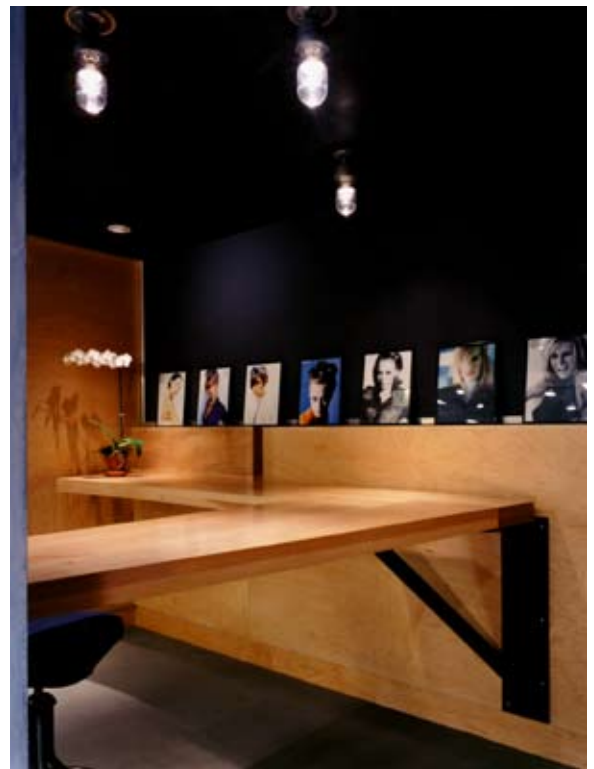
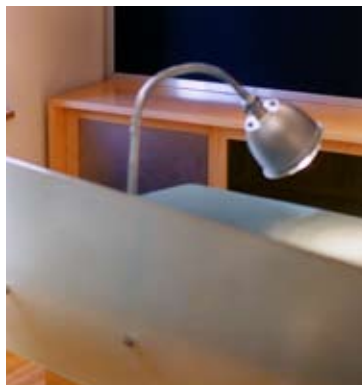
2001 & 2006
office campus



BUMBLE AND BUMBLE

New York
New York

1996
salon and corporate
offices



BUMBLE AND BUMBLE

New York
New York

2004
salon, teaching facilities,
retail, and
administrative offices



ISAAC MIZRAHI

New York
New York

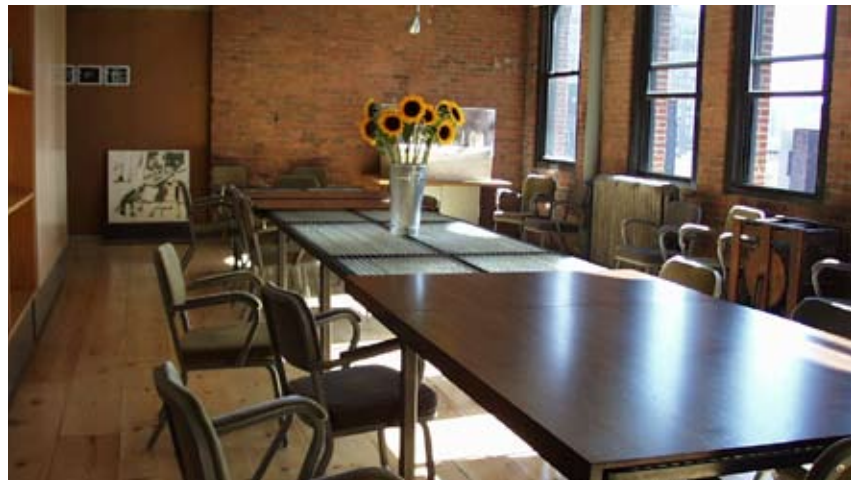
1996
showroom and offices



ANDERSON ARCHITECTS

New York
New York

1999
architects' office



WIGGIN & DANA

Stamford
Connecticut

2001
law offices

